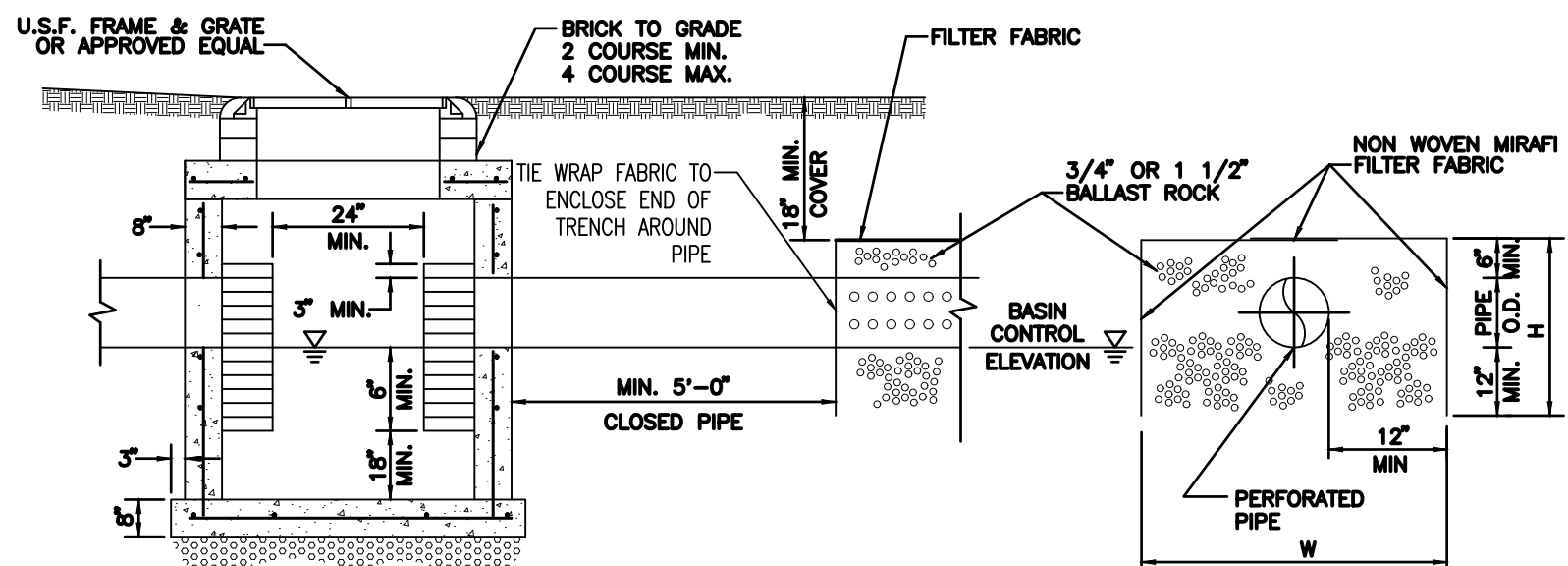


PIPE DIA.	W <sup>1</sup> (IN)	W <sup>2</sup> (IN)	T (GAUGE)	H (IN)
15"	21"	21"	16	VARIES
18"	24"	24"	16	VARIES
21"	30"	30"	16	VARIES
24"	30"	36"	16	VARIES
30"	36"	42"	14	VARIES
36"	42"	48"	14	VARIES
42"	48"	54"	14	VARIES
48"	54"	60"	14	VARIES
54"	60"	66"	14	VARIES

1. RECTANGULAR STRUCTURE  
2. ROUND STRUCTURE

## NOTES:

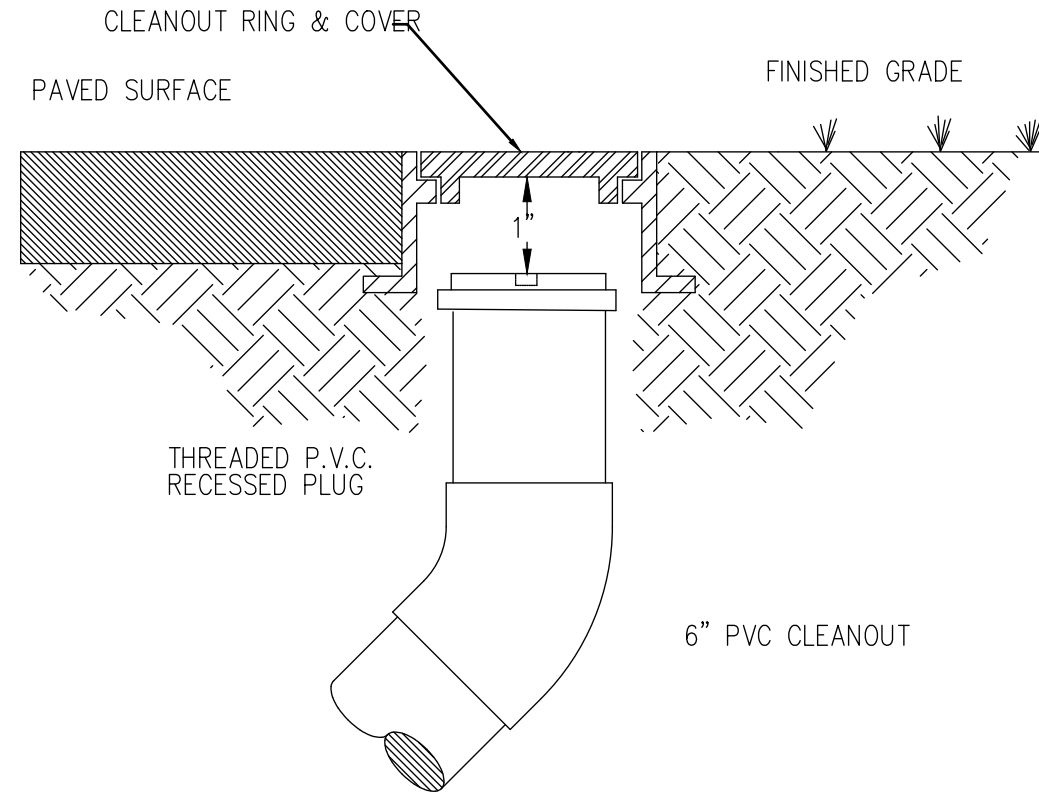
1. ALUMINUM SHEET OF SAME THICKNESS (GAUGE) AS PIPE SHALL BE WELDED TO CLOSE OPENING AT THE TOP.
2. NEOPRENE ADHESIVE BACKED GASKET, OR APPROVED EQUAL (1" x 3") SHALL BE INSTALLED ON THE SIDES AND TOP OF ALL BAFFLES.
3. POLLUTION RETARDANT BAFFLE TO BE FASTENED IN PLACE WITH 3/8"x4" STAINLESS STEEL "RED HEADS", OR APPROVED EQUAL.
4. ALL EXFILTRATION TRENCHES SHALL HAVE A POLLUTION RETARDANT BAFFLE AT EACH CONNECTION POINT TO A STRUCTURE (SEE EXFILTRATION TRENCH DETAIL). THE BOTTOM OF THE BAFFLE SHALL BE A MIN. OF 12" BELOW C.W.E.
5. FIBERGLASS BAFFLES ARE NOT PERMITTED.
6. MOUNTING BRACKETS MAY BE ADDED TO FLAT BARS TO EASE INSTALLATION IN ROUND STRUCTURES. SPACING TO MATCH HOLES IN FLAT BARS.
7. FOR POLLUTION RETARDANT BASINS THE BOTTOM ELEVATION OF THE BAFFLE MUST BE A MINIMUM OF 2' BELOW THE CONTROL WATER ELEVATION.



## NOTES:

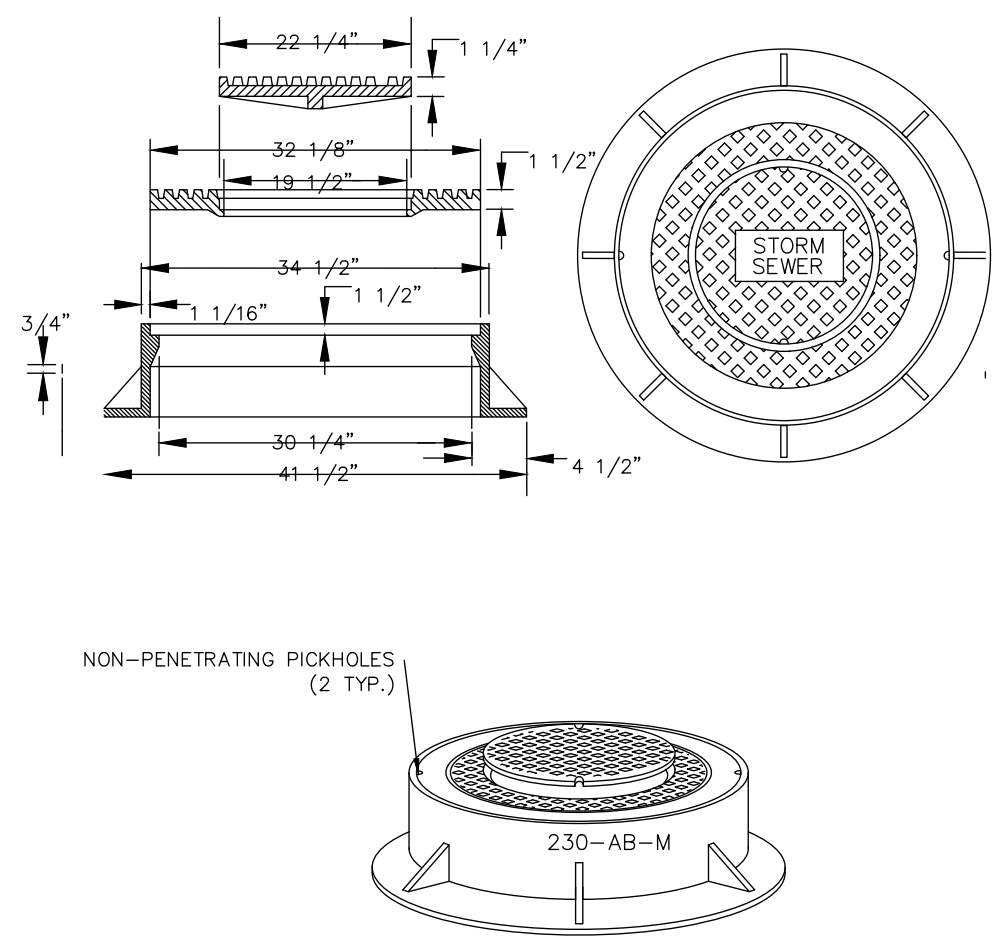
1. SIDES AND TOP OF TRENCH ONLY TO BE LINED WITH FILTER FABRIC. OVERLAP LINDER A MINIMUM OF 2' AT THE TOP OF THE TRENCH.
2. BALLAST ROCK SHALL BE FROM FRESH WATER, WASHED AND FREE OF DELETERIOUS MATTER.
3. ALL EXFILTRATION TRENCHES SHALL HAVE A POLLUTION RETARDANT BAFFLE AT EACH CONNECTION POINT TO A STRUCTURE (SEE POLLUTION RETARDANT BAFFLE DETAIL, EXHIBIT 28) AND WITH NOTE "CONFINED SPACE".
4. GASKETS SHALL BE USED WITH ROP IN EXFILTRATION TRENCH.

## POLLUTION RETARDANT BAFFLE DETAIL



1. THE COVER TO BE MARKED "STORM".

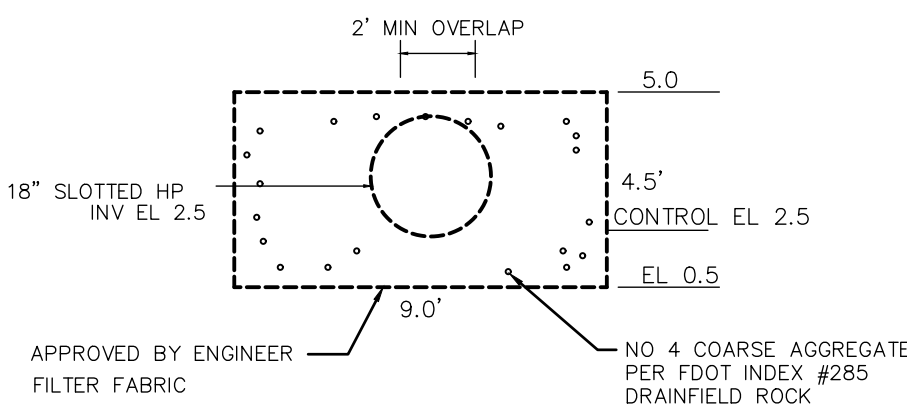
## TYPICAL CLEANOUT INSTALLATION



## NOTES:

1. U.S.F. #230-AB-M MANHOLE RING & DOUBLE COVER. APPROX. TOTAL WEIGHT 605 POUNDS.
2. MANHOLE COVER SHALL BE IMPRINTED WITH "STORM SEWER" AND WITH NOTE "CONFINED SPACE".
3. PAVED AREAS - SET FRAMES AT FINISH GRADE, UNPAVED AREAS - SET FRAMES AT FINISH GRADE + 0.15'.

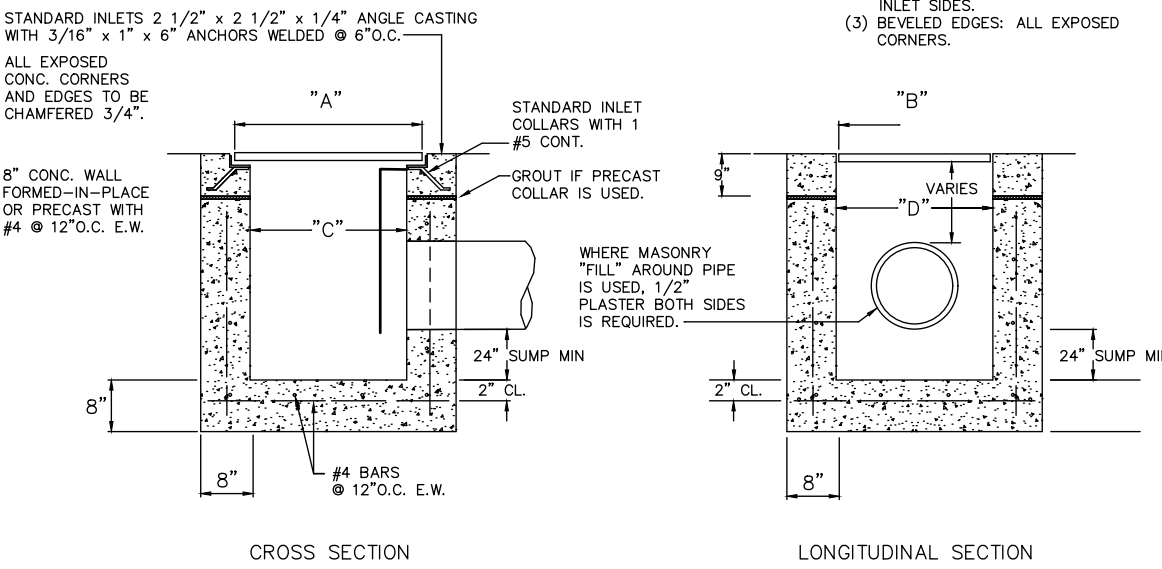
## MANHOLE FRAME AND RING DETAIL



## EXFILTRATION TRENCH (EXF18)

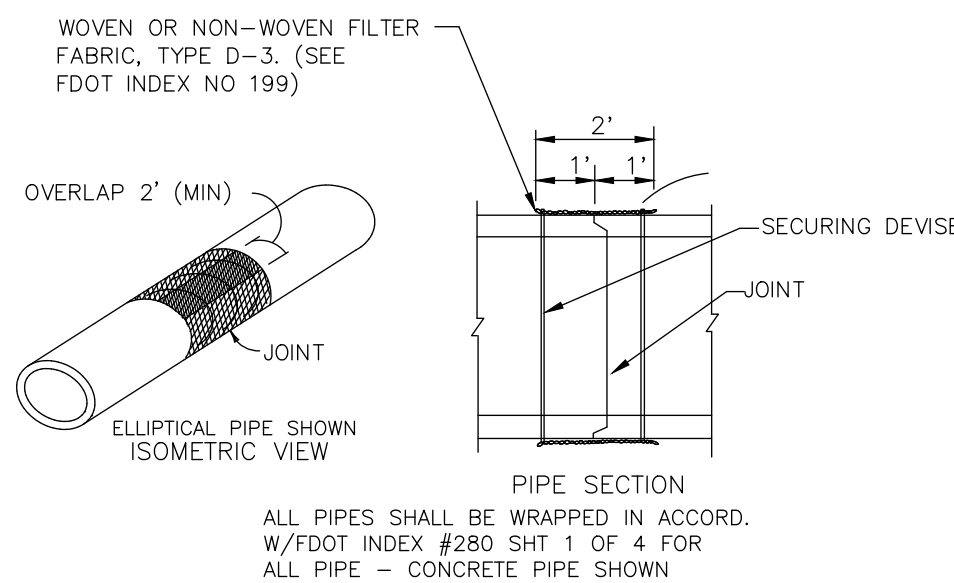
MAX. C. F. S.	TYPE INLET	"A"	"B"	"C"	"D"	GRATE APPROX. WT.
15.85	C	2'-4"	3'-0"	2'-0"	3'-4"	200 LBS.
23.49	D	2'-4"	3'-0"	2'-0"	3'-4"	380 LBS.
35.23	E	3'-2"	3'-0"	2'-0"	3'-4"	465 LBS.
58.20	F	3'-2"	3'-0"	2'-0"	3'-4"	725 LBS.

- NOTES: (1) GRATES TO BE CAST IRON WITH ONE (1) SHOP COAT OF RED LEAD PAINT AND WITH A FIELD COAT TO MEET FDOT STANDARD SPECIFICATIONS, LATEST EDITION.  
(2) SEE DETAIL OF OPENING IN INLET SIDES.  
(3) REVELED EDGES: ALL EXPOSED CORNERS.

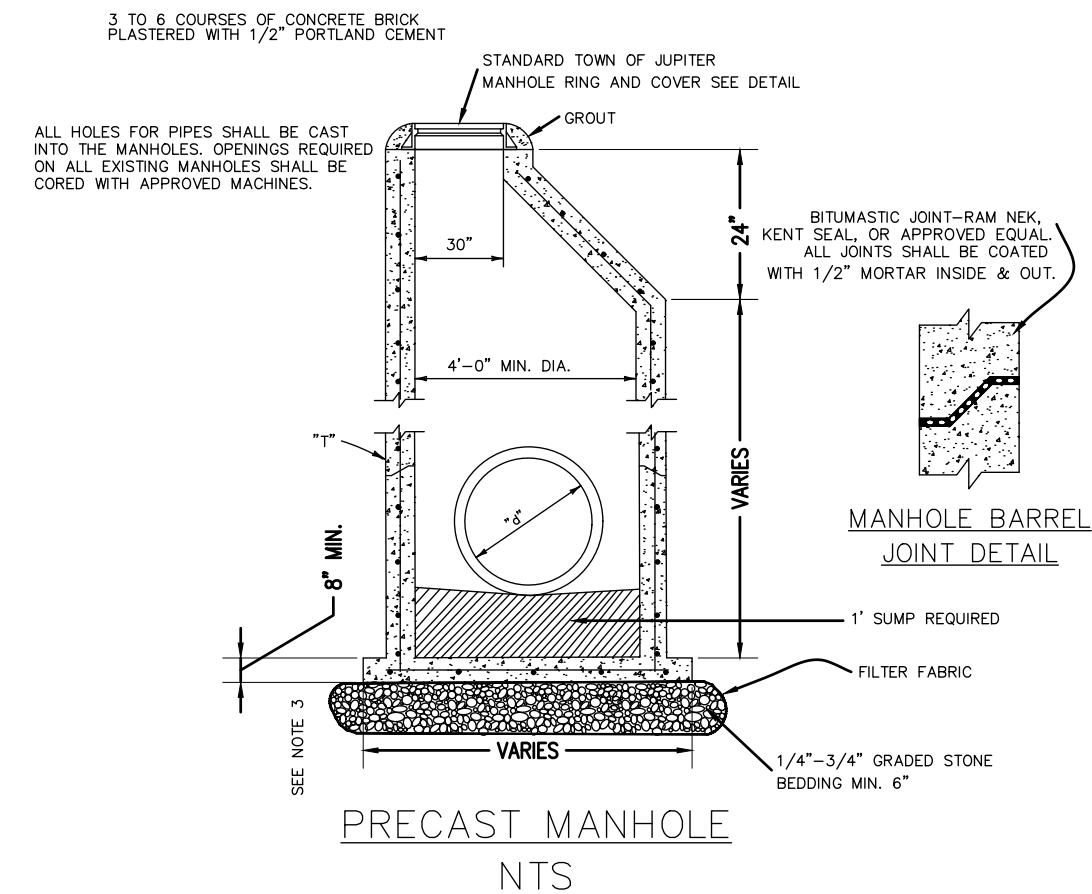


## INLET DETAILS

N.T.S.



## FILTER FABRIC JACKET



## NOTES:

1. MANHOLE SHALL CONFORM TO ASTM C478 WITH 4000 PSI CONCRETE.
2. CONCRETE SHALL BE EITHER CONCRETE OR COCONCRETE.
3. BASE SHALL BE A MINIMUM OF 6" AND PRECAST WITH BOTTOM SECTION.
4. ONE COURSE OF 12" CTS. JOINT MATS IN CENTER 1/2 OF CONCRETE WALL.
5. COMPLETE THE JUNCTION BETWEEN PIPE AND RING WALL WITH CLAY BRICK.
6. WALL THICKNESS 20" SHALL BE A MINIMUM OF 8" INLET CONSTRUCTION DETAILS.
7. FOR ADDITIONAL INFORMATION AND CLARIFICATIONS CONCERNING MANHOLE AND INLET CONSTRUCTION DETAILS AND SPECIFICATIONS, REFER TO FDOT ROADWAY AND TRAFFIC DESIGN STANDARDS (STANDARD INDEX MANUAL), LATEST EDITION.

## STORM SEWER PRECAST MANHOLE

## REVISIONS

**Jeff H. Iravani, Inc.**  
Consulting Engineers

1934 COMMERCE LANE, SUITE 5  
JUPITER, FLORIDA 33458  
TEL: (561) 575-6030  
FAX: (561) 575-6088  
EMAIL: jh@jellsouth.net  
WEBSITE: www.jhinc.com

**Griggs Express**  
**Car Wash**

Pompano Beach, Florida

Grading, Paving & Drainage  
Details

DATE	SCALE	DESIGNED BY	DRAWN BY	JOB NO.
10-25-2025	NTS	NTS	NTS	2510-1525

## SEAL

FR # 6986

SHEET NO.

C-202